

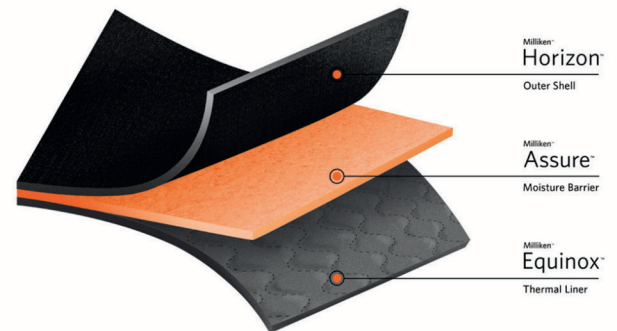
# M<sup>2</sup> MAVERICK™ PACKAGE

The M<sup>2</sup> Maverick Package sets the new standard for firefighter turnout gear. Now featuring the Milliken™ Horizon + Equinox + Assure composite, fire departments and PPE committees now have the option to specify fully non-PFAS gear composite using 100% Milliken fabrics while ensuring freedom of movement and comfort across all layers with our Maximum Mobility™ design.

## WHY CHOOSE THE M<sup>2</sup> MAVERICK™

- ▶ **Exceptional Value:**  
Thoughtfully curated selection of materials and technologies that deliver optimal performance without the hefty price tag, presenting a savvy and economical solution for your safety needs
- ▶ **Maximum Comfort:**  
Maximum Mobility™ M<sup>2</sup> design ensures comfort across all layers  
  
Bi-swing back, underarm gussets and a bi-swing knee in our anatomical patterning provide unrestricted movement and superior flexibility throughout
- ▶ **Strength & Uniformity:**  
Milliken Horizon Fabric™, with a fiber blend of 50% Para-aramid, 48% Meta-aramid, and 2% Antistatic, ensures performance, durability, and safety  
  
ColorSeal™ Technology allows shell to retain its appearance and strength over time, providing unmatched uniformity, comfort, and safety
- ▶ **Enhanced Safety & Performance:** Fabric composites engineered to optimize protection, heat resistance, and breathability

- ▶ **Personalized Protection:**  
Popular PPE features included, plus additional options for tailored customization to meet the specifications and needs of your Department
- ▶ **Non-PFAS Innovation:**  
Featuring the Milliken™ Horizon + Equinox + Assure composite, the Maverick Package now offers fully non-PFAS turnout gear for every layer—outer shell, thermal liner, and moisture barrier—delivering superior performance, durability, and safety



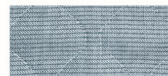
## MATERIAL

### OUTER SHELL

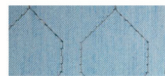


MILLIKEN HORIZON™ 6.8 OZ  
BLACK OR GOLD

### THERMAL LINERS



MILLIKEN EQUINOX™  
3-LAYER — 7.1 OZ



TENCATE TITANIUM™  
ELITE SL2I — 7.8 OZ

### MOISTURE BARRIERS



GORE CROSSTECH®  
BLACK



MILLIKEN ASSURE™  
(NON-PFAS)

- ▶ **Unmatched Colorfastness:** Vibrant colors that endure through countless launderings
- ▶ **Superior UV Lightfastness:** Guarding against the damaging effects of UV exposure
- ▶ **Black & Gold Fabric Availability:** Ready-made options to suit your department's unique style
- ▶ **Non-PFAS DWR Finish:** Keeps firefighters dry and reduces chemical exposure
- ▶ **Producer Dyed Fibers:** Minimizing water and chemical consumption for sustainability efforts

### CONTACT US

PHONE: 215.849.1971  
EMAIL: CS@RICOCHET-GEAR.COM

4700 WISSAHICKON AVE.  
PHILADELPHIA, PA, 19144

SCAN TO  
LEARN MORE



# PRODUCT FEATURES



PART NUMBER: MM-MV-C

## STANDARD JACKET FEATURES

- ▶ **Zipper In / Hook-&-Loop Out:** Easy closure for quick response
- ▶ **Reflective 3" Trim:** NYC basic pattern, double-stitched, with customizable color and style options
- ▶ **Full Bellows Coat Pockets:** 8" x 8" x 2" with Kevlar® twill fabric lining for added durability
- ▶ **Survivor Style Flashlight Holder:** Conveniently located on the right chest for quick access
- ▶ **Neoprene-Lined Radio Pocket And Mic Tab With D-Ring:** 8" x 3.5" x 2", ensuring secure storage and longevity
- ▶ **Nomex® Wristlets:** 7" with thumb hole for added protection — alternate option of 4" Nomex® wristlet with thumb loop available
- ▶ **Reinforced Self-Material Cuffs:** Ensuring durability in the line of duty
- ▶ **45° Angle Mic Tab:** On the upper storm flap for convenient use
- ▶ **Downward Facing "D" Ring** On the lower storm flap for versatility
- ▶ **Additional Options For Enhanced Functionality:** Choose from options like fleece hand warmer pockets, name badges, and lettering to make your turnout jacket uniquely yours

PART NUMBER: MM-MV-P

## STANDARD PANT FEATURES

- ▶ **Hook-&-Loop Fly With Hook-&-Dee Closure**
- ▶ **10" x 10" Full Bellows Pockets:** Interior half-lined Kevlar® for added longevity
- ▶ **Basic 3" Trim Pattern:** Reflective, double stitched, with your choice of trim color & style (lime/yellow or red/orange, standard or segmented)
- ▶ **Snap-Style Or Button-Style Suspenders**
- ▶ **Arashield™ Knee Reinforcements**
- ▶ **Reinforced Cuffs:** Choice of self-material or Arashield™
- ▶ **1-Layer ¼" Silicone Knee Padding:** For increase protection
- ▶ **Optional Harness Systems & Other Customization:** Available for you to tailor your gear to your exact need

### CONTACT US

PHONE: 215.849.1971

EMAIL: CS@RICOCHET-GEAR.COM

4700 WISSAHICKON AVE.

PHILADELPHIA, PA, 19144

SCAN TO  
LEARN MORE

